

addlink
SSD Enclosure
User Manual

**B21 SSD
Enclosure
User Manual**

[Introduction](#)

Important Notice

Required Tools &
Prepare

Installation Process

SSD Format Process

Introduction

Very thanks for you to purchase our all new addlink B21 SSD. B21 is an SSD Enclosure and fully compatible with USB 3.2 Gen2x2 (20Gbps) Interface. Backward compatible with USB 3.1/3.0/2.0. With M.2 NVMe PCIe SSD, the B21 can easily push R/W speeds up to 2050MB/s.

**B21 SSD
Enclosure
User Manual**

Introduction

[Important Notice](#)

Required Tools &
Prepare

Installation Process

SSD Format Process

Important Notice

Warranty Information

A limited 1-year warranty applied to addlink B21 SSD enclosure product purchased from Amazon or authorized sellers.

addlink provides the repair and replacement service for defective products to our customers within the warranty period.

1. Please note that addlink is not responsible for providing free repair if the product defect is caused by any inappropriate usage.
2. addlink denies any liability for any damage to or loss of any program or data of this device caused by improper handling and misuse.
3. addlink is not guarantee the data stored on the B21 under any circumstances. Back up your data regularly, either to a computer or another storage device.

**B21 SSD
Enclosure
User Manual**

Introduction

Important Notice

[Required Tools &
Prepare](#)

Installation Process

SSD Format Process

Required Tools & Prepare

1. A well-lit room with a table to work on.
2. M.2 NVME/SATA SSD you need to install.
3. addlink B21 SSD enclosure
4. PC/Laptop to format the SSD if needed.

**B21 SSD
Enclosure
User Manual**

Introduction

Important Notice

Required Tools &
Prepare

[Installation Process](#)

SSD Format Process

Installation Process

1. Slide the switch underneath the product to remove the drive tray from the SSD Enclosure.



2. At a 30-degree angle, insert your SSD into the M.2 port of the unit. Using the rubber screw to secure your SSD.



3. Place the drive tray back into the SSD enclosure, ensuring you hear a "Click" sound to confirm it is properly seated.



**B21 SSD
Enclosure
User Manual**

Introduction

Important Notice

Required Tools &
Prepare

Installation Process

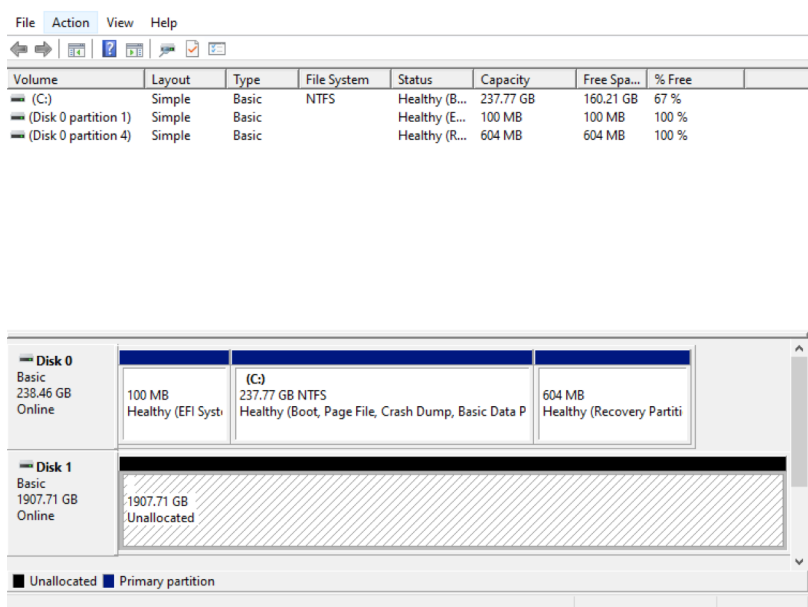
SSD Format Process

SSD Format Process

Please Read Below Before Format

If you are installing a brand-new SSD in our B21 SSD enclosure, you will need to format the SSD first to allow the device to recognize it. However, if you are installing an old SSD that already contains data, you may not need to format it if the device can recognize it and read/write data. If the SSD is not recognized, make sure to back up your data from your previous PC properly and then format it.

1. Click Windows button to search the disk management app.



B21 SSD Enclosure User Manual

Introduction

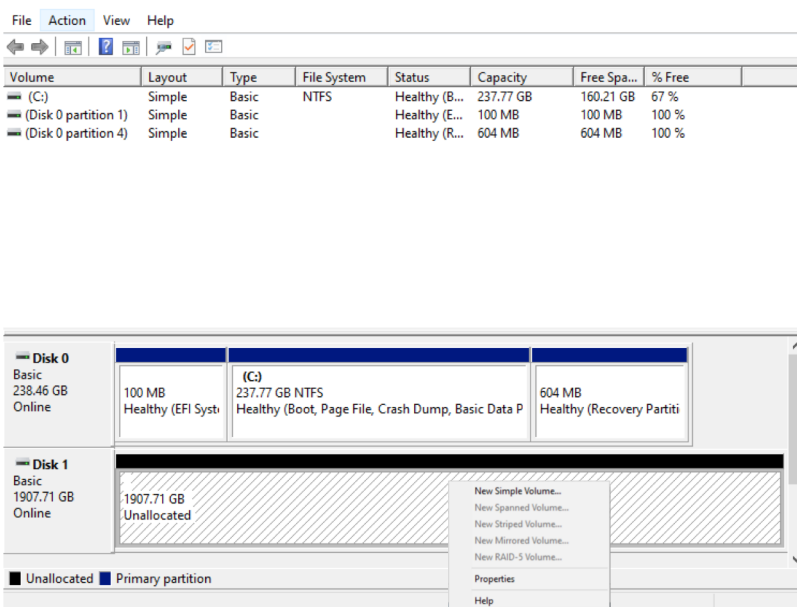
Important Notice

Required Tools &
Prepare

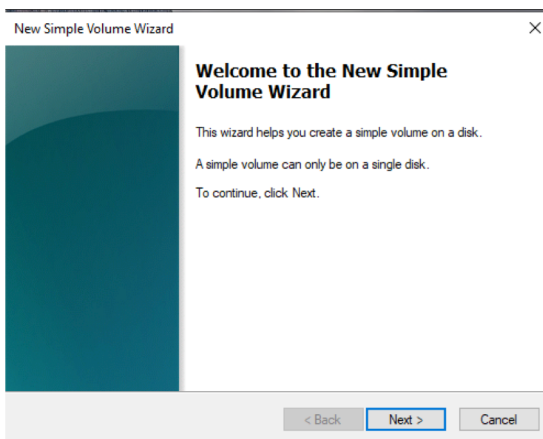
Installation Process

SSD Format Process

2. Right click on the SSD which you need to format and chose new simple volume.



3. In the New Simple Volume Wizard, select Next.



**B21 SSD
Enclosure
User Manual**

Introduction

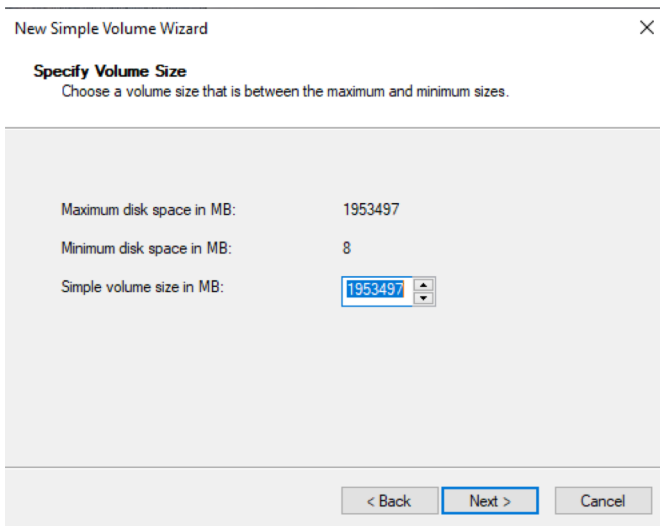
Important Notice

Required Tools &
Prepare

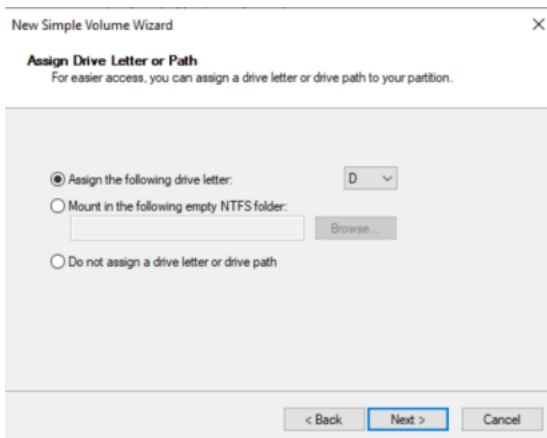
Installation Process

SSD Format Process

4. Enter the size of the volume you want to create in megabytes (MB) or accept the maximum default size, and then select Next.



5. Accept the default drive letter or choose a different drive letter to identify the partition, and then select Next.



**B21 SSD
Enclosure
User Manual**

Introduction

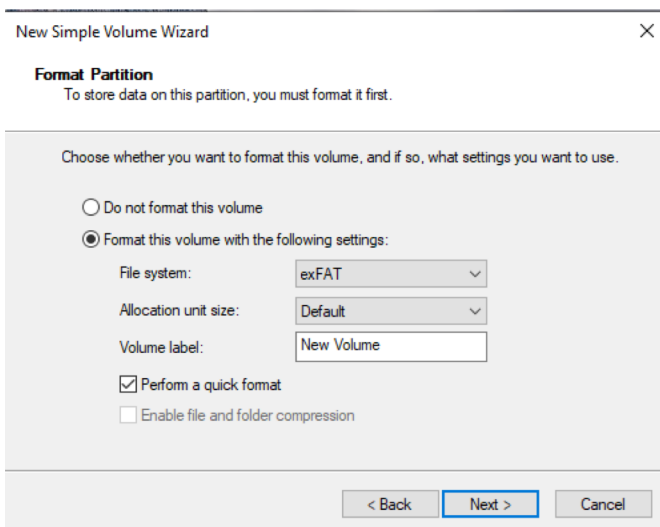
Important Notice

Required Tools &
Prepare

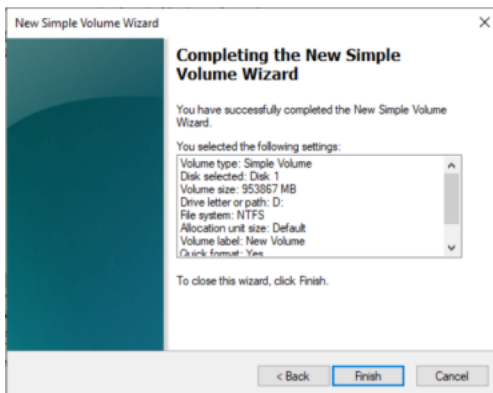
Installation Process

SSD Format Process

6. For the file system, if you only use the SSD on Windows devices, you can choose **NTFS**. However, we highly recommend using **exFAT** because it offers better compatibility across different devices and operating systems, including Windows, macOS, and some Linux distributions.



8. Review your choices, and then select Finish.



HEADQUARTER

6F., No. 300, Ruiguang Rd., Neihu Dist.,
Taipei City 114, Taiwan (R.O.C.)

CONTACT INFORMATION

TEL : +886-2-8797 3116

FAX : +886-2-8797 3522