

AddGame Installation Guide

for Sony PS5

AddGame **Installation** **Guide for PS5**

Introduction

Important Notice

Required Tools &
Prepare

Installation Process

Troubleshooting tips



Introduction

AddGame SSD are all high-Performance M.2 NVMe SSD designed for use with PS5. These SSD come equipped with a 3D Fin-Array, which effectively reduces temperatures within the PS5 system. This feature allows the AddGame M.2 SSD to operate at its maximum performance while ensuring enhanced stability throughout its lifespan. For avid gamers and hardware enthusiasts, the AddGame SSD presents an excellent opportunity to build a "Legendary" system.

Before continuing with installation process, we strongly advise you to carefully review the warranty policy and instructions provided by your PS5 manufacturer. By doing so, you can ensure that you follow the proper procedures to install your SSD correctly and maintain compliance with the PS5 warranty conditions.

AddGame Installation Guide for PS5

Introduction

[Important Notice](#)

Required Tools &
Prepare

Installation Process

Troubleshooting tips

Important Notice

1. To prevent your SSD or PS5 console from damage by static electricity, before installation, please touch a metal grounded object to remove any static electricity from your body.
2. Please do not use this product in a wet environment. Make sure that you are working in static-safe environment.
3. Do not grab packages. Hold only the edged of the SSD.
4. Please do not disassemble or reassemble the heatsink. If the product has been disassembled or damaged by user, all warranties will be void.
5. Please review your Sony PS5 owner's manual to ensure your follow proper procedures to install your SSD.
6. After installation, please update with the latest system software. (After version 21.02-04.00.00) for PS5 consoles.

AddGame Installation Guide for PS5

Introduction

Important Notice

[Required Tools &
Prepare](#)

Installation Process

Troubleshooting tips

Required Tools & Prepare

1. A well-lit room with a table to work on.
2. a #1 Phillips or cross-head screwdriver
3. An AddGame A-Series SSD and your PS5 Station System
4. PS5 System User Manual

AddGame Installation Guide for PS5

Introduction

Important Notice

Required Tools &
Prepare

[Installation Process](#)

Troubleshooting tips

Installation Process

1. Start by turning off your PS5 console and disconnecting all cables and devices from it.
2. Carefully place your PS5 console on a flat surface, preferably with a protective covering, to avoid any potential scratches or damage.
3. Proceed to open the case of your PS5 console. The method for opening the case may vary depending on the PS5 model you have. Please refer to your PS5 owner's manual or the manufacturer's official website for specific instructions on how to open the case safely.



AddGame Installation Guide for PS5

Introduction

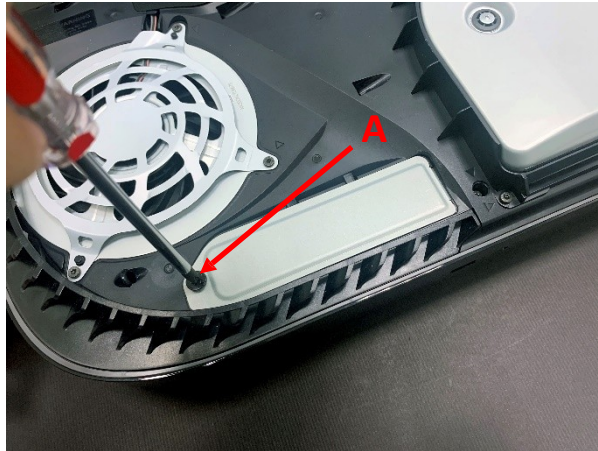
Important Notice

Required Tools &
Prepare

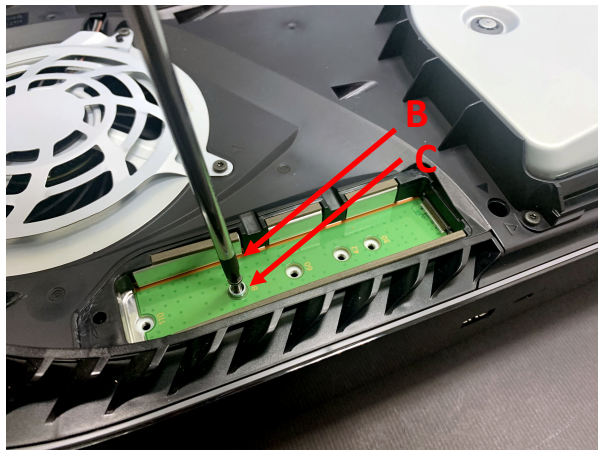
[Installation Process](#)

Troubleshooting tips

4. Remove the screw from the expansion slot cover (A) and then remove the cover.



5. Remove the screw (B). Move the spacer (C) to the groove corresponding to the size of your AddGame A-Series SSD.



AddGame Installation Guide for PS5

Introduction

Important Notice

Required Tools &
Prepare

[Installation Process](#)

Troubleshooting tips

6. Hold the edge of your M.2 SSD, align it with the notch on the expansion connector, and diagonally upwards insert it firmly.



Please Make sure the SSD is firmly inserted all the way into the expansion connector. If not, it may cause damage to your PS5 console.

AddGame Installation Guide for PS5

Introduction

Important Notice

Required Tools &
Prepare

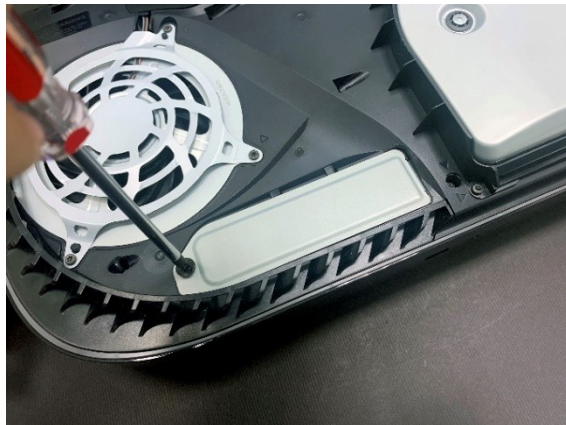
[Installation Process](#)

Troubleshooting tips

7. Tilt your SSD down and fasten the screw (B) with spacer (C) together.



8. Attach the expansion slot cover and fasten the screw (A).



AddGame Installation Guide for PS5

Introduction

Important Notice

Required Tools &
Prepare

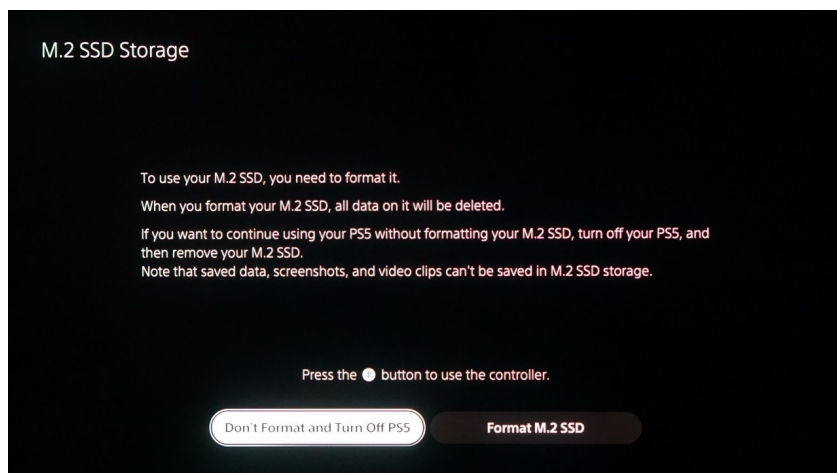
[Installation Process](#)

Troubleshooting tips

9. Replace the cover by positioning it slightly away (about 2 cm or 3/4 inch) from the top edge and sliding it back into place. You'll hear a click when the cover is secured.

10. Connect cables and power adapter. Turn on the Power.

11. When your PS5 console turns on, the formatting guide appears. Follow the on-screen instructions and then you can format your M.2 SSD.



AddGame **Installation** **Guide for PS5**

Introduction

Important Notice

Required Tools &
Prepare

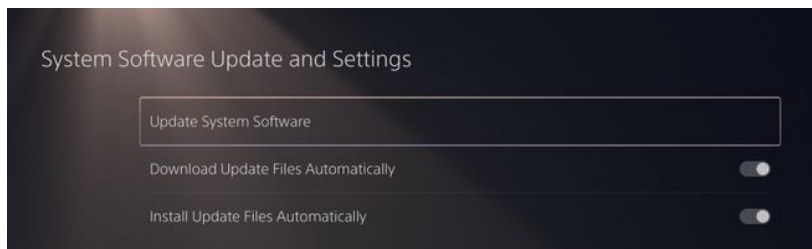
Installation Process

[Troubleshooting tips](#)

Troubleshooting tips

If your PS5 does not detect or recognize your AddGame A-series SSD, please check these things first.

1. Please make sure you fully plugged it hard to the expansion connector
2. Please check if your PS5 with the latest firmware?
 - Please make sure your software have been updated to the latest version (system software version 21.02-04 or higher)
 - You can go to **Settings > System > System Software > System Software Update and Settings > Update System Software.**



HEADQUARTER

6F., No. 300, Ruiguang Rd., Neihu Dist.,
Taipei City 114, Taiwan (R.O.C.)

CONTACT INFORMATION

TEL : +886-2-8797 3116

FAX : +886-2-8797 3522